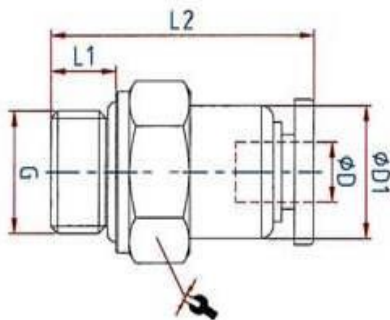
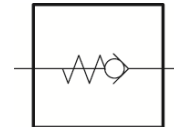


The non-return function of these push-in fittings prevents the air from flowing back; the unidirectional design means air flow is only possible in one direction.

These valves are available with air flow from the port to the tube or from the tube to the port.

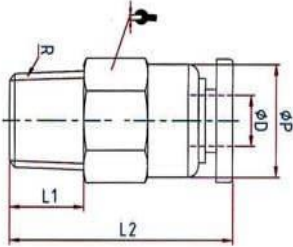
Material	Plastic and nickel-plated brass
Working pressure	0 - 10 bar
Min. opening pressure	0.2 bar
Temperature range	0 °C to 60 °C
Medium	Compressed air*
Sealant	NBR
Applications	Compressed air systems
Recommended hose	PU or PA (nylon)



200.54-2

Straight non-return valve, flow direction from port to tube, parallel male thread with O-ring (NBR)

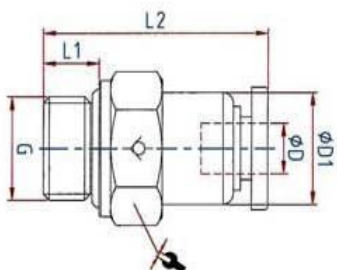
Art. No.	Type No.	Thread	for tube O.D.	L1	L2	a/f	Ø D1	Sleeve	Standard thread
			mm	mm	mm	mm	mm		
151490	200.54-2	M5	4	3.5	33.0	10	10	Plastic blue	DIN 13-1
151491	200.184-2	G 1/8	4	5.5	28.0	14	10	Plastic blue	DIN EN ISO 228-1
151492	200.186-2	G 1/8	6	5.5	30.0	14	12	Plastic blue	DIN EN ISO 228-1
151493	200.188-2	G 1/8	8	5.5	33.0	14	14	Plastic blue	DIN EN ISO 228-1
151494	200.146-2	G 1/4	6	6.5	29.5	17	12	Plastic blue	DIN EN ISO 228-1
151495	200.148-2	G 1/4	8	6.5	35.5	17	14	Plastic blue	DIN EN ISO 228-1
151496	200.3810-2	G 3/8	10	7.5	41.0	20	17	Plastic blue	DIN EN ISO 228-1
151497	200.3812-2	G 3/8	12	7.5	44.5	20	20	Plastic blue	DIN EN ISO 228-1
151498	200.1210-2	G 1/2	10	10.0	41.0	24	17	Plastic blue	DIN EN ISO 228-1
151499	200.1212-2	G 1/2	12	10.0	44.5	24	20	Plastic blue	DIN EN ISO 228-1



202.146-2

Straight non-return valve, flow direction from port to tube, conical male thread, coated

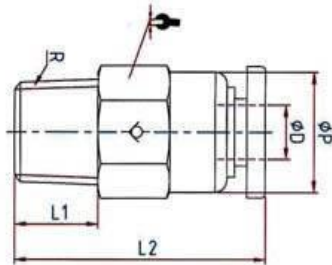
Art. No.	Type No.	Thread	for tube O.D. mm	L1 mm	L2 mm	a/f mm	Ø P mm	Sleeve	Standard thread
151500	202.184-2	R 1/8	4	7.5	28.0	10	10	Plastic blue	ISO 7-1
151501	202.186-2	R 1/8	6	7.5	30.0	12	12	Plastic blue	ISO 7-1
151502	202.188-2	R 1/8	8	7.5	33.0	14	14	Plastic blue	ISO 7-1
151503	202.146-2	R 1/4	6	10.0	30.0	14	12	Plastic blue	ISO 7-1
151504	202.148-2	R 1/4	8	10.0	35.5	14	14	Plastic blue	ISO 7-1
151505	202.3810-2	R 3/8	10	10.5	41.0	17	17	Plastic blue	ISO 7-1
151506	202.3812-2	R 3/8	12	10.5	44.5	21	20	Plastic blue	ISO 7-1
151507	202.1210-2	R 1/2	10	13.5	41.0	21	17	Plastic blue	ISO 7-1
151508	202.1212-2	R 1/2	12	13.5	44.5	21	20	Plastic blue	ISO 7-1



201.146-2

Straight non-return valve, flow direction from tube to port, parallel male thread with O-ring (NBR)

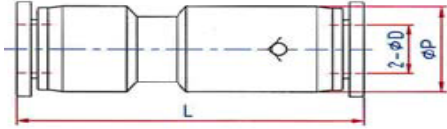
Art. No.	Type No.	Thread	for tube O.D. mm	L1 mm	L2 mm	a/f mm	Ø D1 mm	Sleeve	Standard thread
151509	201.54-2	M5	4	3.5	33.0	10	10	Plastic blue	DIN 13-1
151510	201.184-2	G 1/8	4	5.5	28.0	14	10	Plastic blue	DIN EN ISO 228-1
151511	201.186-2	G 1/8	6	5.5	30.0	14	12	Plastic blue	DIN EN ISO 228-1
151512	201.188-2	G 1/8	8	5.5	33.0	14	14	Plastic blue	DIN EN ISO 228-1
151513	201.146-2	G 1/4	6	6.5	30.0	17	12	Plastic blue	DIN EN ISO 228-1
151514	201.148-2	G 1/4	8	6.5	35.5	17	14	Plastic blue	DIN EN ISO 228-1
151515	201.3810-2	G 3/8	10	7.5	41.0	20	17	Plastic blue	DIN EN ISO 228-1
151516	201.3812-2	G 3/8	12	7.5	44.5	20	20	Plastic blue	DIN EN ISO 228-1
151517	201.1210-2	G 1/2	10	10.0	41.0	24	17	Plastic blue	DIN EN ISO 228-1
151518	201.1212-2	G 1/2	12	10.0	44.5	24	20	Plastic blue	DIN EN ISO 228-1



203.186-2

Straight non-return valve, flow direction from tube to port, conical male thread, coated

Art. No.	Type No.	Thread	for hose O.D. mm	L1 mm	L2 mm	a/f mm	Ø P mm	Sleeve	Standard thread
151519	203.184-2	R 1/8	4	7.5	28.0	10	10	Plastic blue	ISO 7-1
151520	203.186-2	R 1/8	6	7.5	30.0	12	12	Plastic blue	ISO 7-1
151521	203.188-2	R 1/8	8	7.5	33.0	14	14	Plastic blue	ISO 7-1
151522	203.146-2	R 1/4	6	10.0	30.0	14	12	Plastic blue	ISO 7-1
151523	203.148-2	R 1/4	8	10.0	35.5	14	14	Plastic blue	ISO 7-1
151524	203.3810-2	R 3/8	10	10.5	41.0	17	17	Plastic blue	ISO 7-1
151525	203.3812-2	R 3/8	12	10.5	44.5	21	20	Plastic blue	ISO 7-1
151526	203.1210-2	R 1/2	10	13.5	41.0	21	17	Plastic blue	ISO 7-1
151527	203.1212-2	R 1/2	12	13.5	44.5	21	20	Plastic blue	ISO 7-1



204.12-2

Straight non-return valve with plug connection

Art. No.	Type No.	for hose O.D. mm	L mm	$\varnothing P$ mm	Material	Sleeve
151528	204.04-2	4	43.0	10.0	Nickel-plated brass	Plastic blue
151529	204.06-2	6	46.0	12.0	Nickel-plated brass	Plastic blue
151530	204.08-2	8	53.5	14.0	Nickel-plated brass	Plastic blue
151531	204.10-2	10	61.5	17.0	Nickel-plated brass	Plastic blue
151532	204.12-2	12	67.0	20.5	Nickel-plated brass	Plastic blue

Note on the sealing effect of check valves

The pressure prevailing on the outlet side supports the shut-off components.

A minimum pressure of 1.3 bar (hose connection 4-8 mm) and 2 bar (hose connection 10-12 mm) is required to prevent backflow.

* The suitability test for the use with alternative specifications is the user's responsibility.